

POPULATION AND HOUSING ESTIMATES (2010)
City of Carlsbad



POPULATION AND HOUSING

	Jan. 1, 2010		
Population	106,804		
Household Population	106,139		
Group Quarters	665		
Persons per Household	2.63		
	Total	Occupied	Vacancy
	Housing	Households	Rate
Housing Units	43,844	40,351	8.0%
Single Family - Detached	22,810	21,348	6.4%
Single Family - Multiple-Unit	6,783	6,203	8.6%
Multi-Family	12,952	11,629	10.2%
Mobile Home and Other	1,299	1,171	9.9%

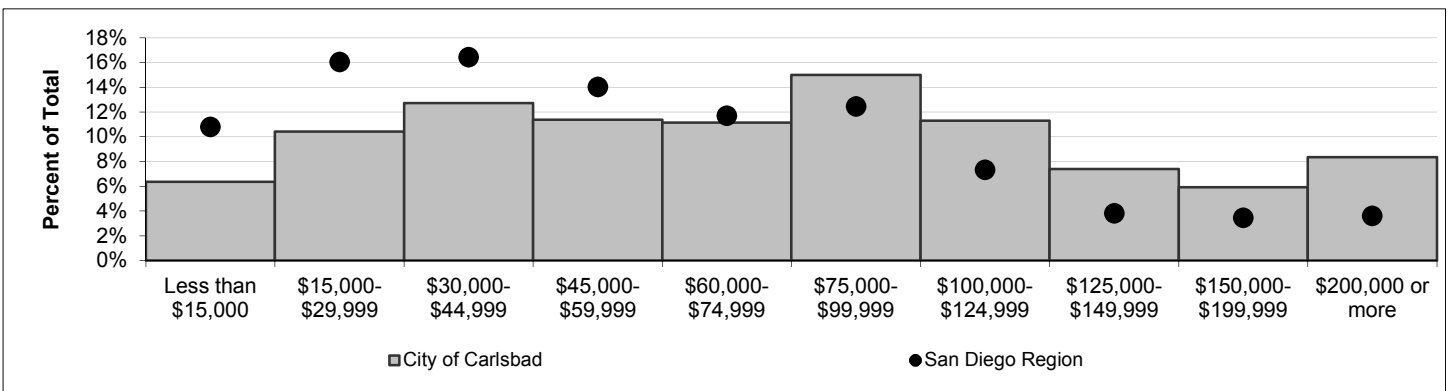
Note: For structure type definitions, see page 3.

HOUSEHOLD INCOME -- 2009 estimate (2010 data to be released winter 2010).

Households by Income Category (1999 dollars, adjusted for inflation)

	Less than \$15,000	\$15,000- \$29,999	\$30,000- \$44,999	\$45,000- \$59,999	\$60,000- \$74,999	\$75,000- \$99,999	\$100,000- \$124,999	\$125,000- \$149,999	\$150,000- \$199,999	\$200,000 or more
Households	2,552	4,175	5,097	4,565	4,465	6,017	4,533	2,965	2,372	3,348
% of Total	6%	10%	13%	11%	11%	15%	11%	7%	6%	8%

Median Household Income	Jan. 1, 2009
Adjusted for inflation (1999 \$)	\$72,281
Not adjusted for inflation (current \$)	\$101,358



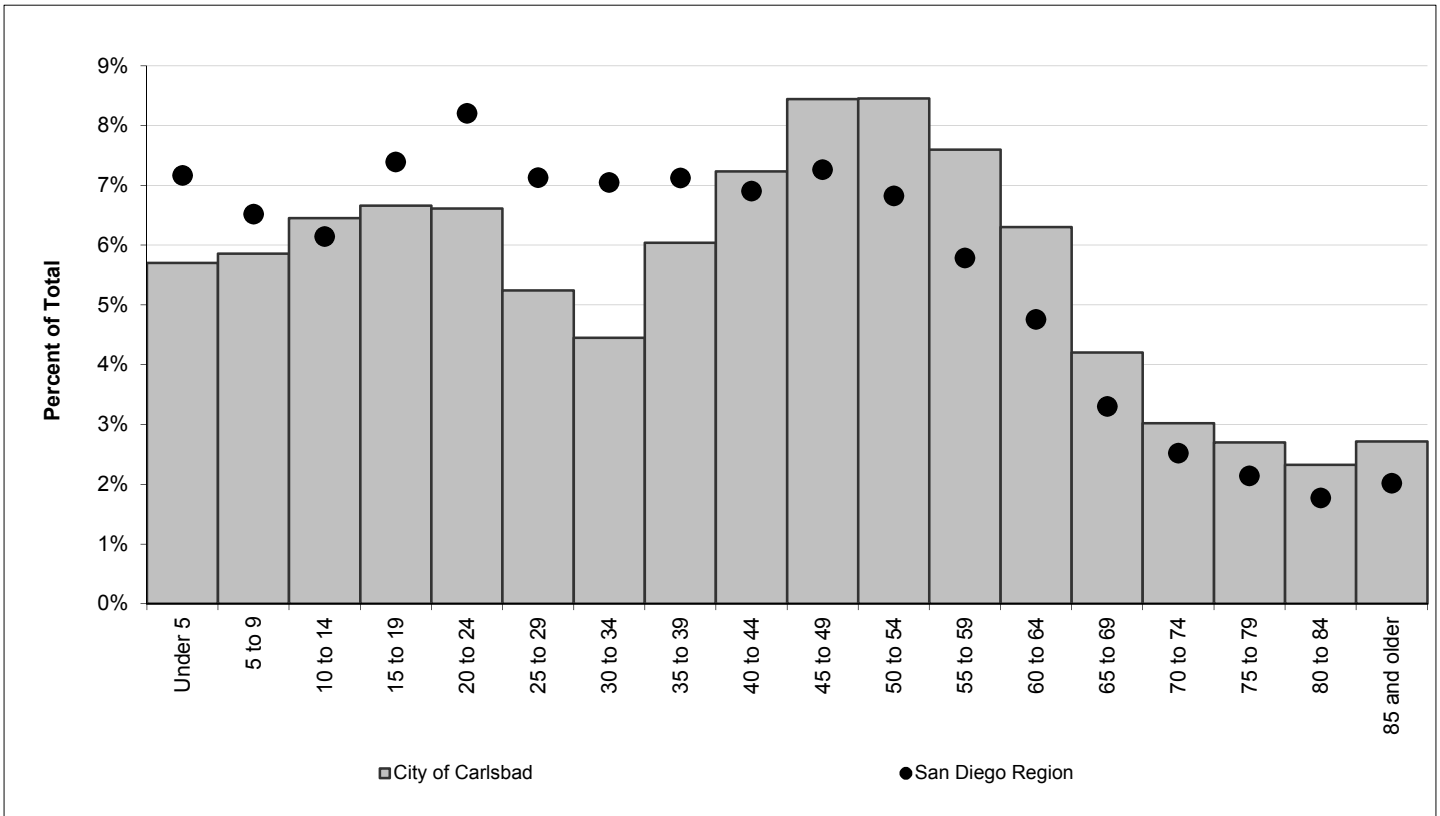
ADVISORY:

These data are annual estimates, and do not reflect Census 2010. Census 2010 data will be released in late 2010 and early 2011. Housing and demographic data are based on the following data sources: U.S. Census Bureau, Census 2000; California Department of Finance E-5 population estimates for cities and the County of San Diego (2010); San Diego County Assessor Records for housing units (2010); Vital Events Records from the California Department of Health (2008). Estimates are controlled to city- and county-level totals published by the California Department of Finance. Caution should be taken when using data for small population groups, particularly at small levels of geography.

POPULATION BY GENDER AND AGE

	Total	Male	Female	Percent Female
Total Population	106,804	51,307	55,497	52%
Under 5	6,089	3,030	3,059	50%
5 to 9	6,258	3,122	3,136	50%
10 to 14	6,890	3,297	3,593	52%
15 to 17	4,319	2,135	2,184	51%
18 and 19	2,793	1,396	1,397	50%
20 to 24	7,060	3,618	3,442	49%
25 to 29	5,598	2,918	2,680	48%
30 to 34	4,752	2,509	2,243	47%
35 to 39	6,451	3,194	3,257	50%
40 to 44	7,723	3,702	4,021	52%
45 to 49	9,015	4,285	4,730	52%
50 to 54	9,027	4,223	4,804	53%
55 to 59	8,117	3,723	4,394	54%
60 and 61	2,913	1,344	1,569	54%
62 to 64	3,818	1,846	1,972	52%
65 to 69	4,487	2,126	2,361	53%
70 to 74	3,229	1,429	1,800	56%
75 to 79	2,882	1,248	1,634	57%
80 to 84	2,483	1,015	1,468	59%
85 and older	2,900	1,147	1,753	60%
Under 18	23,556	11,584	11,972	51%
65 and older	15,981	6,965	9,016	56%
Median age	42.1	40.6	43.4	-

POPULATION BY AGE



POPULATION BY RACE, ETHNICITY AND AGE

	Non-Hispanic					
	Hispanic	White	Black	American Indian	Asian & Pacific Isl.	Other
Total Population	15,035	80,974	1,201	324	6,080	3,190
Under 5	1,055	4,165	120	31	518	200
5 to 9	1,022	4,324	54	23	473	362
10 to 14	1,116	4,812	103	17	413	429
15 to 17	783	2,992	64	18	189	273
18 and 19	527	1,952	39	9	126	140
20 to 24	1,305	5,050	104	17	268	316
25 to 29	1,226	3,754	77	24	329	188
30 to 34	1,323	2,929	74	18	278	130
35 to 39	1,355	4,385	91	22	446	152
40 to 44	1,272	5,605	90	27	591	138
45 to 49	1,119	7,011	94	23	608	160
50 to 54	846	7,377	72	27	532	173
55 to 59	661	6,885	75	26	341	129
60 and 61	187	2,534	17	10	127	38
62 to 64	222	3,364	25	11	149	47
65 to 69	284	3,922	21	13	190	57
70 to 74	211	2,769	22	4	161	62
75 to 79	204	2,471	18	1	139	49
80 to 84	142	2,179	18	2	83	59
85 and older	175	2,494	23	1	119	88
Under 18	3,976	16,293	341	89	1,593	1,264
65 and older	1,016	13,835	102	21	692	315
Median age	31.8	45.4	32.7	36.1	40.0	23.0

New Housing Structure Type Definitions:

Single Family - Detached: Traditional detached single family housing units.

Single Family - Multiple Unit: Includes single family attached housing units, duplexes, townhouses, and lower density condominium developments (generally less than 12 units per acre).

Multi-Family: Apartments and higher density condominium developments (generally more than 12 units per acre)

Mobile Home and Other: Mobile homes in mobile home parks, boats, and other housing not elsewhere classified.