

POPULATION AND HOUSING ESTIMATES (2010)
City of Del Mar



POPULATION AND HOUSING

	Jan. 1, 2010		
Population	4,660		
Household Population	4,658		
Group Quarters	2		
Persons per Household	2.15		
	Total	Occupied	Vacancy
	Housing	Households	Rate
Housing Units	2,542	2,162	14.9%
Single Family - Detached	1,248	1,073	14.0%
Single Family - Multiple-Unit	518	439	15.3%
Multi-Family	776	650	16.2%
Mobile Home and Other	0	0	0.0%

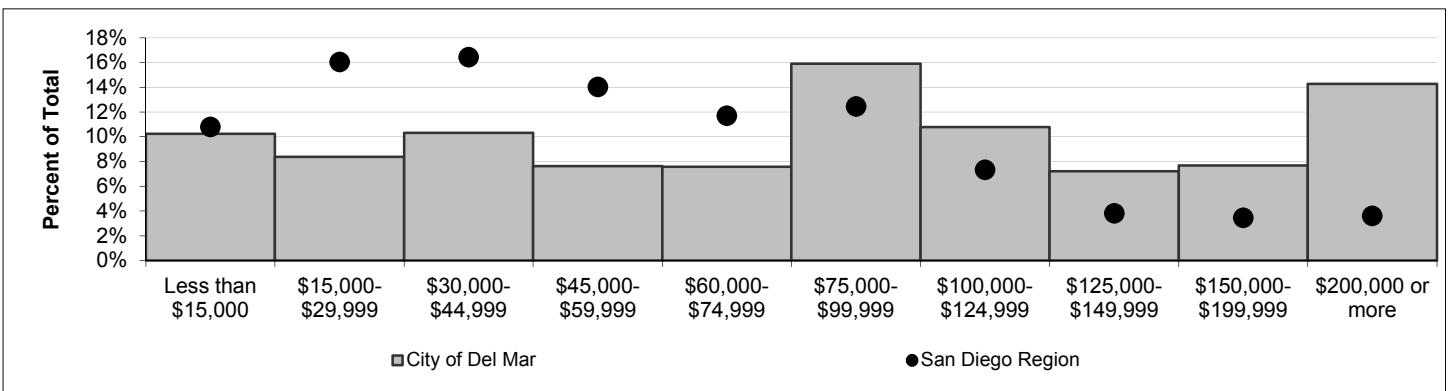
Note: For structure type definitions, see page 3.

HOUSEHOLD INCOME -- 2009 estimate (2010 data to be released winter 2010).

Households by Income Category (1999 dollars, adjusted for inflation)

	Less than \$15,000	\$15,000- \$29,999	\$30,000- \$44,999	\$45,000- \$59,999	\$60,000- \$74,999	\$75,000- \$99,999	\$100,000- \$124,999	\$125,000- \$149,999	\$150,000- \$199,999	\$200,000 or more
Households	220	180	222	164	163	342	232	155	165	307
% of Total	10%	8%	10%	8%	8%	16%	11%	7%	8%	14%

Median Household Income	Jan. 1, 2009
Adjusted for inflation (1999 \$)	\$84,211
Not adjusted for inflation (current \$)	\$118,087



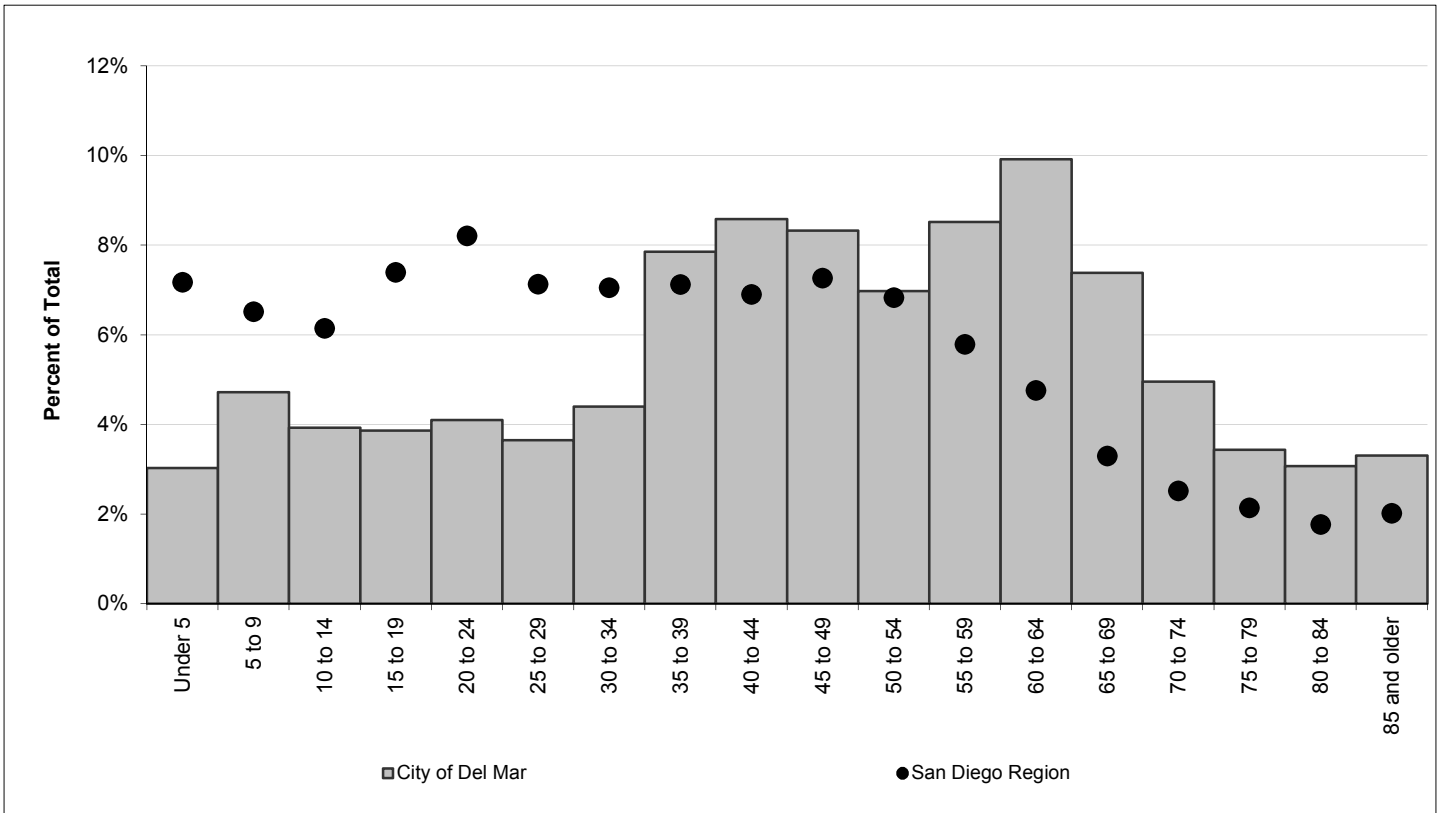
ADVISORY:

These data are annual estimates, and do not reflect Census 2010. Census 2010 data will be released in late 2010 and early 2011. Housing and demographic data are based on the following data sources: U.S. Census Bureau, Census 2000; California Department of Finance E-5 population estimates for cities and the County of San Diego (2010); San Diego County Assessor Records for housing units (2010); Vital Events Records from the California Department of Health (2008). Estimates are controlled to city- and county-level totals published by the California Department of Finance. Caution should be taken when using data for small population groups, particularly at small levels of geography.

POPULATION BY GENDER AND AGE

	Total	Male	Female	Percent Female
Total Population	4,660	2,339	2,321	50%
Under 5	141	64	77	55%
5 to 9	220	113	107	49%
10 to 14	183	88	95	52%
15 to 17	94	49	45	48%
18 and 19	86	36	50	58%
20 to 24	191	91	100	52%
25 to 29	170	94	76	45%
30 to 34	205	120	85	41%
35 to 39	366	200	166	45%
40 to 44	400	218	182	46%
45 to 49	388	207	181	47%
50 to 54	325	159	166	51%
55 to 59	397	187	210	53%
60 and 61	170	75	95	56%
62 to 64	292	141	151	52%
65 to 69	344	173	171	50%
70 to 74	231	118	113	49%
75 to 79	160	82	78	49%
80 to 84	143	58	85	59%
85 and older	154	66	88	57%
Under 18	638	314	324	51%
65 and older	1,032	497	535	52%
Median age	48.5	47.3	49.9	-

POPULATION BY AGE



POPULATION BY RACE, ETHNICITY AND AGE

	Non-Hispanic					
	Hispanic	White	Black	American Indian	Asian & Pacific Isl.	Other
Total Population	213	3,983	19	25	315	105
Under 5	11	121	0	0	5	4
5 to 9	5	191	0	0	20	4
10 to 14	6	142	0	1	20	14
15 to 17	7	70	0	0	12	5
18 and 19	4	69	0	0	9	4
20 to 24	9	161	1	2	13	5
25 to 29	7	139	1	7	12	4
30 to 34	13	160	0	1	22	9
35 to 39	19	306	1	0	35	5
40 to 44	16	341	0	2	33	8
45 to 49	28	330	2	1	19	8
50 to 54	16	274	2	3	19	11
55 to 59	13	354	6	1	16	7
60 and 61	6	156	0	1	6	1
62 to 64	15	261	2	4	7	3
65 to 69	11	316	1	1	11	4
70 to 74	7	200	2	1	18	3
75 to 79	13	133	0	0	11	3
80 to 84	5	126	0	0	12	0
85 and older	2	133	1	0	15	3
Under 18	29	524	0	1	57	27
65 and older	38	908	4	2	67	13
Median age	46.7	49.4	57.1	43.8	41.4	38.5

New Housing Structure Type Definitions:

Single Family - Detached: Traditional detached single family housing units.

Single Family - Multiple Unit: Includes single family attached housing units, duplexes, townhouses, and lower density condominium developments (generally less than 12 units per acre).

Multi-Family: Apartments and higher density condominium developments (generally more than 12 units per acre)

Mobile Home and Other: Mobile homes in mobile home parks, boats, and other housing not elsewhere classified.