

POPULATION AND HOUSING ESTIMATES (2010)

City of Encinitas



POPULATION AND HOUSING

	Jan. 1, 2010		
Population	65,171		
Household Population	64,612		
Group Quarters	559		
Persons per Household	2.77		
	Total Housing	Occupied Households	Vacancy Rate
Housing Units	24,877	23,295	6.4%
Single Family - Detached	13,558	12,692	6.4%
Single Family - Multiple-Unit	7,106	6,662	6.2%
Multi-Family	3,437	3,239	5.8%
Mobile Home and Other	776	702	9.5%

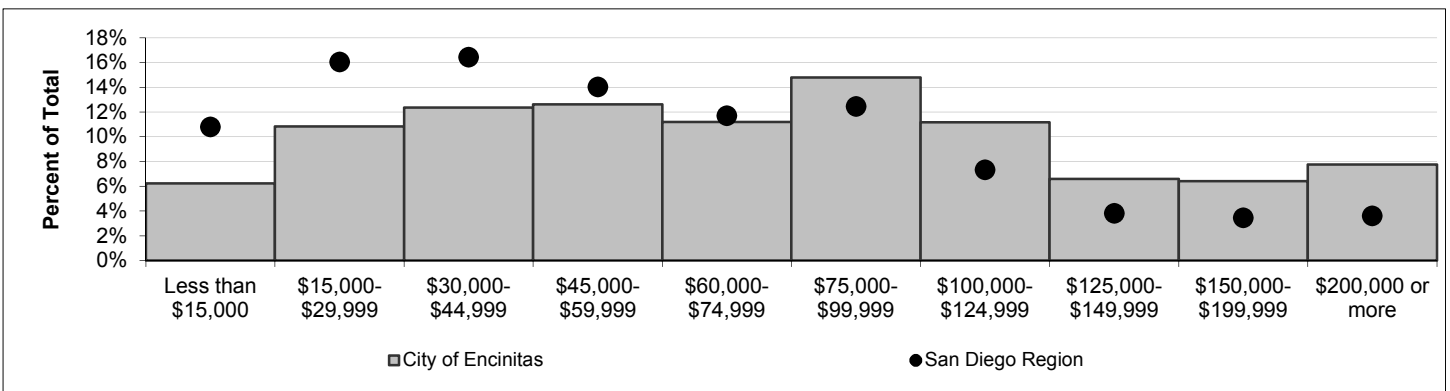
Note: For structure type definitions, see page 3.

HOUSEHOLD INCOME -- 2009 estimate (2010 data to be released winter 2010).

Households by Income Category (1999 dollars, adjusted for inflation)

	Less than \$15,000	\$15,000-\$29,999	\$30,000-\$44,999	\$45,000-\$59,999	\$60,000-\$74,999	\$75,000-\$99,999	\$100,000-\$124,999	\$125,000-\$149,999	\$150,000-\$199,999	\$200,000 or more
Households	1,476	2,567	2,927	2,984	2,650	3,502	2,643	1,560	1,518	1,837
% of Total	6%	11%	12%	13%	11%	15%	11%	7%	6%	8%

Median Household Income	Jan. 1, 2009
Adjusted for inflation (1999 \$)	\$70,630
Not adjusted for inflation (current \$)	\$99,043



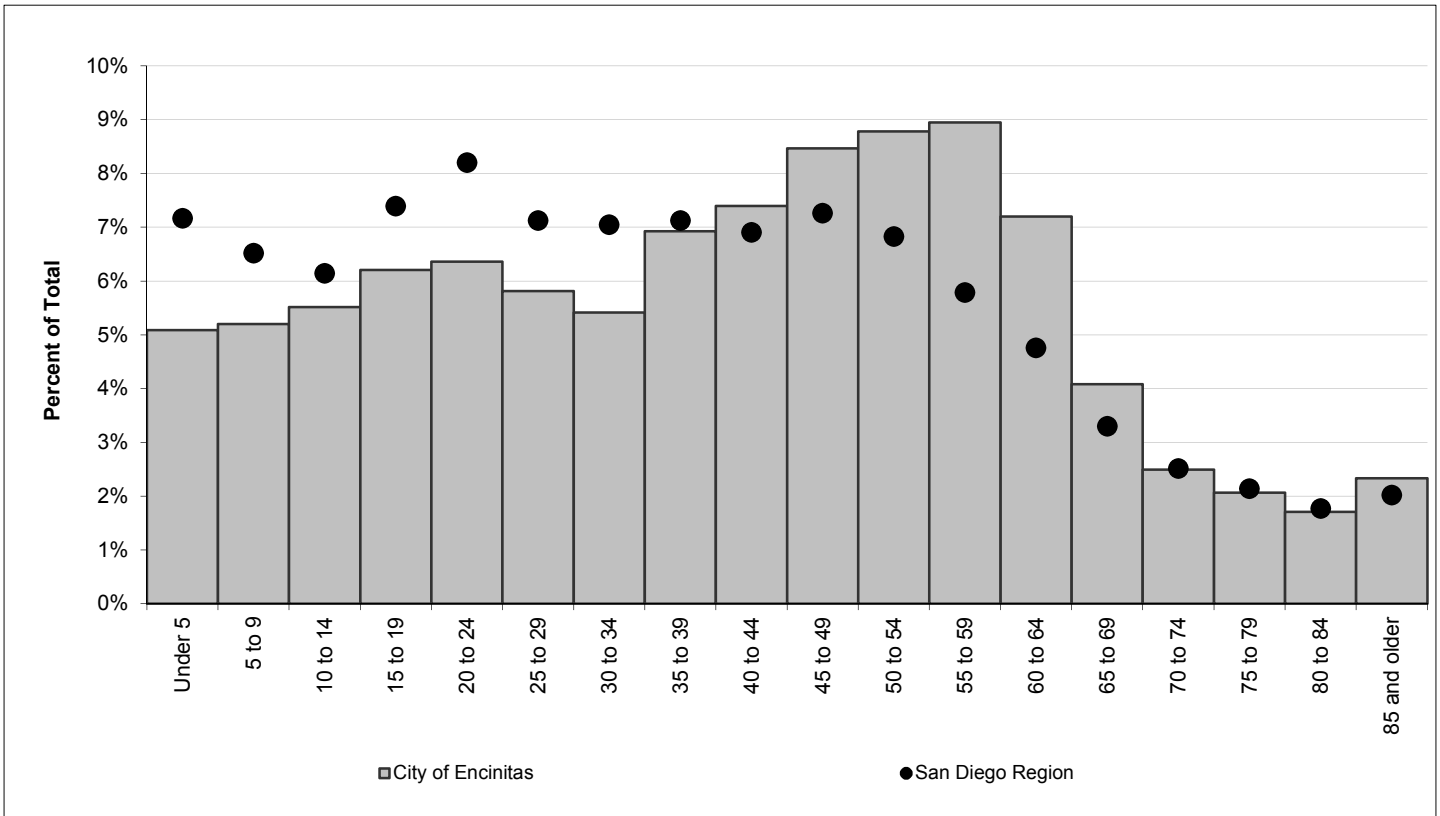
ADVISORY:

These data are annual estimates, and do not reflect Census 2010. Census 2010 data will be released in late 2010 and early 2011. Housing and demographic data are based on the following data sources: U.S. Census Bureau, Census 2000; California Department of Finance E-5 population estimates for cities and the County of San Diego (2010); San Diego County Assessor Records for housing units (2010); Vital Events Records from the California Department of Health (2008). Estimates are controlled to city- and county-level totals published by the California Department of Finance. Caution should be taken when using data for small population groups, particularly at small levels of geography.

POPULATION BY GENDER AND AGE

	Total	Male	Female	Percent Female
Total Population	65,171	32,232	32,939	51%
Under 5	3,315	1,734	1,581	48%
5 to 9	3,389	1,709	1,680	50%
10 to 14	3,596	1,744	1,852	52%
15 to 17	2,228	1,101	1,127	51%
18 and 19	1,815	920	895	49%
20 to 24	4,146	2,199	1,947	47%
25 to 29	3,789	2,002	1,787	47%
30 to 34	3,530	1,841	1,689	48%
35 to 39	4,513	2,284	2,229	49%
40 to 44	4,820	2,348	2,472	51%
45 to 49	5,518	2,762	2,756	50%
50 to 54	5,724	2,650	3,074	54%
55 to 59	5,831	2,822	3,009	52%
60 and 61	2,119	1,077	1,042	49%
62 to 64	2,574	1,322	1,252	49%
65 to 69	2,660	1,264	1,396	52%
70 to 74	1,624	753	871	54%
75 to 79	1,348	592	756	56%
80 to 84	1,113	481	632	57%
85 and older	1,519	627	892	59%
Under 18	12,528	6,288	6,240	50%
65 and older	8,264	3,717	4,547	55%
Median age	42.3	41.2	43.4	-

POPULATION BY AGE



POPULATION BY RACE, ETHNICITY AND AGE

	Non-Hispanic					
	Hispanic	White	Black	American Indian	Asian & Pacific Isl.	Other
Total Population	11,871	48,299	458	150	2,662	1,731
Under 5	745	2,223	33	15	222	77
5 to 9	828	2,228	6	4	148	175
10 to 14	782	2,498	13	3	124	176
15 to 17	580	1,496	9	1	54	88
18 and 19	416	1,294	11	1	33	60
20 to 24	916	2,958	26	5	107	134
25 to 29	1,071	2,476	25	7	117	93
30 to 34	1,149	2,111	29	9	131	101
35 to 39	1,149	3,017	37	12	205	93
40 to 44	953	3,480	34	7	241	105
45 to 49	790	4,314	33	24	247	110
50 to 54	639	4,712	40	11	206	116
55 to 59	504	4,990	31	12	199	95
60 and 61	179	1,797	13	11	84	35
62 to 64	214	2,193	22	10	94	41
65 to 69	280	2,140	27	6	137	70
70 to 74	175	1,297	18	4	93	37
75 to 79	153	1,059	17	5	80	34
80 to 84	154	839	15	3	65	37
85 and older	194	1,177	19	0	75	54
Under 18	2,935	8,445	61	23	548	516
65 and older	956	6,512	96	18	450	232
Median age	32.6	45.4	45.9	47.3	43.9	33.1

New Housing Structure Type Definitions:

Single Family - Detached: Traditional detached single family housing units.

Single Family - Multiple Unit: Includes single family attached housing units, duplexes, townhouses, and lower density condominium developments (generally less than 12 units per acre).

Multi-Family: Apartments and higher density condominium developments (generally more than 12 units per acre)

Mobile Home and Other: Mobile homes in mobile home parks, boats, and other housing not elsewhere classified.