

POPULATION AND HOUSING ESTIMATES (2010)

City of Escondido



POPULATION AND HOUSING

	Jan. 1, 2010		
Population	147,514		
Household Population	145,320		
Group Quarters	2,194		
Persons per Household	3.23		
	Total Housing	Occupied Households	Vacancy Rate
Housing Units	47,682	44,973	5.7%
Single Family - Detached	22,958	21,356	7.0%
Single Family - Multiple-Unit	4,519	4,229	6.4%
Multi-Family	16,469	15,810	4.0%
Mobile Home and Other	3,736	3,578	4.2%

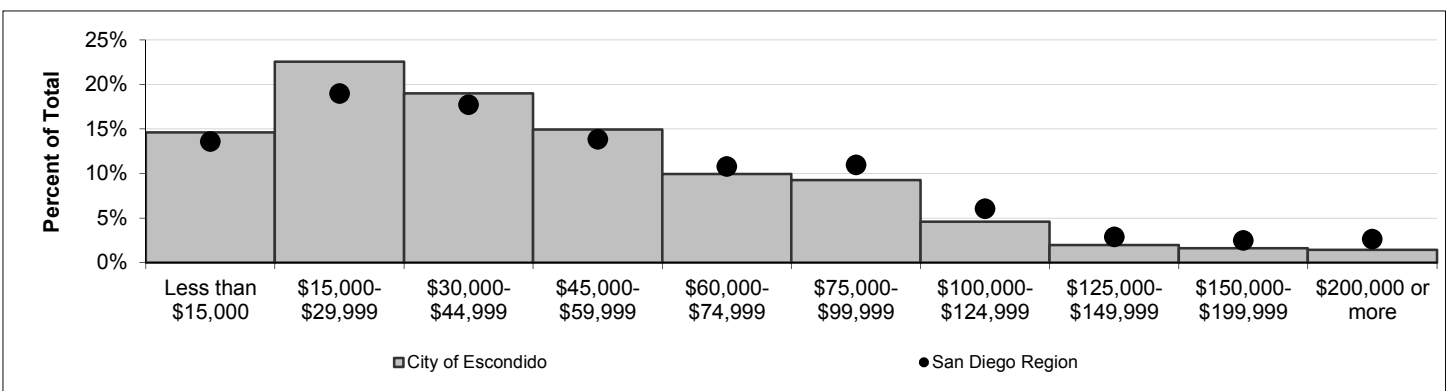
Note: For structure type definitions, see page 3.

HOUSEHOLD INCOME

Households by Income Category (1999 dollars, adjusted for inflation)

	Less than \$15,000	\$15,000-\$29,999	\$30,000-\$44,999	\$45,000-\$59,999	\$60,000-\$74,999	\$75,000-\$99,999	\$100,000-\$124,999	\$125,000-\$149,999	\$150,000-\$199,999	\$200,000 or more
Households	6,573	10,147	8,541	6,720	4,483	4,169	2,064	896	730	650
% of Total	15%	23%	19%	15%	10%	9%	5%	2%	2%	1%

Median Household Income	Jan. 1, 2010
Adjusted for inflation (1999 \$)	\$40,127
Not adjusted for inflation (current \$)	\$56,259



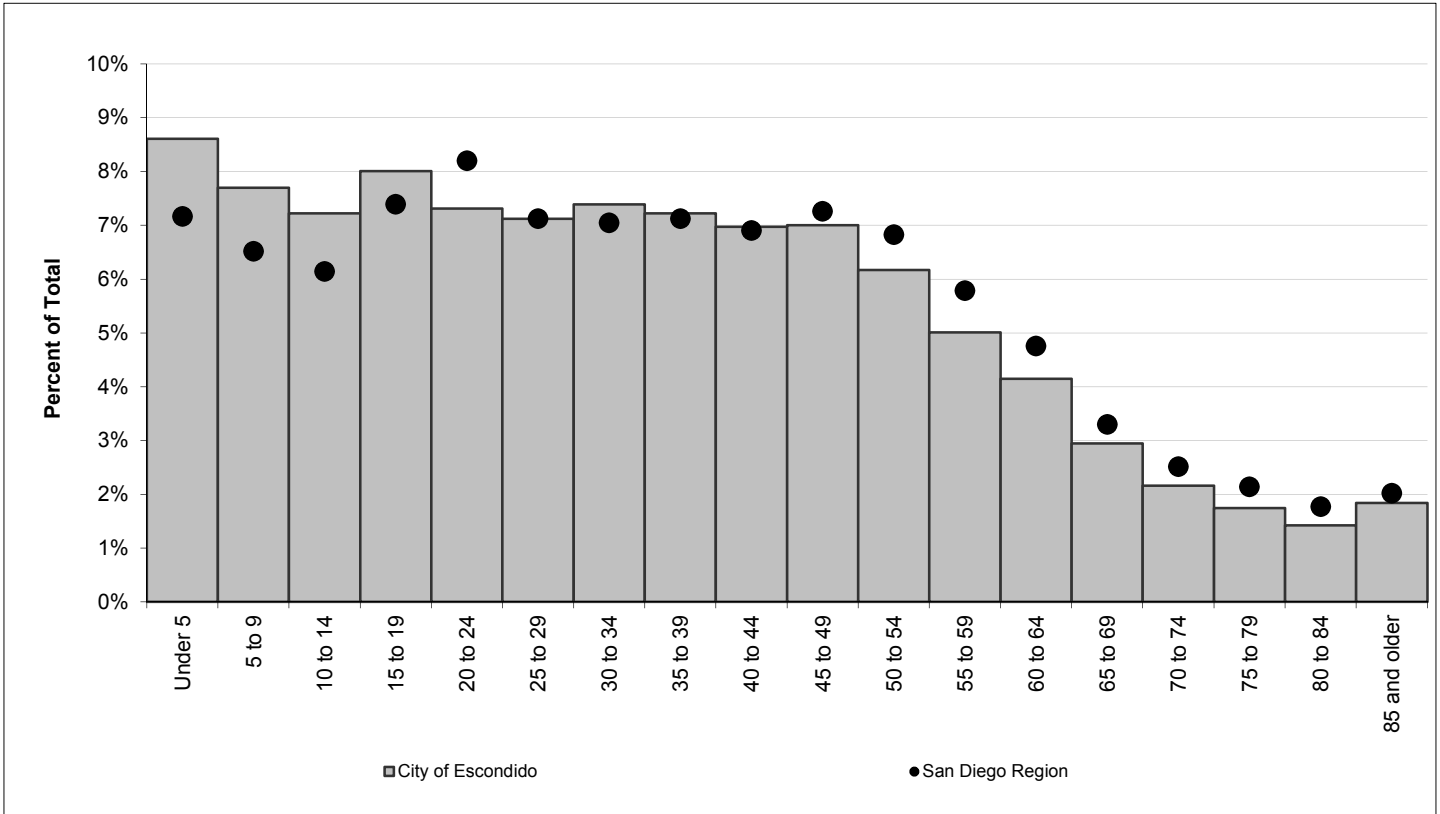
ADVISORY:

These data are annual estimates, and do not reflect Census 2010. Census 2010 data will be released in late 2010 and early 2011. Housing and demographic data are based on the following data sources: U.S. Census Bureau, Census 2000; California Department of Finance E-5 population estimates for cities and the County of San Diego (2010); San Diego County Assessor Records for housing units (2010); Vital Events Records from the California Department of Health (2008). Estimates are controlled to city- and county-level totals published by the California Department of Finance. Caution should be taken when using data for small population groups, particularly at small levels of geography.

POPULATION BY GENDER AND AGE

	Total	Male	Female	Percent Female
Total Population	147,514	72,854	74,660	51%
Under 5	12,702	6,404	6,298	50%
5 to 9	11,358	5,733	5,625	50%
10 to 14	10,652	5,243	5,409	51%
15 to 17	6,926	3,354	3,572	52%
18 and 19	4,885	2,459	2,426	50%
20 to 24	10,784	5,484	5,300	49%
25 to 29	10,506	5,574	4,932	47%
30 to 34	10,903	5,764	5,139	47%
35 to 39	10,656	5,386	5,270	49%
40 to 44	10,288	5,130	5,158	50%
45 to 49	10,329	5,105	5,224	51%
50 to 54	9,102	4,400	4,702	52%
55 to 59	7,386	3,559	3,827	52%
60 and 61	2,612	1,277	1,335	51%
62 to 64	3,505	1,635	1,870	53%
65 to 69	4,342	2,044	2,298	53%
70 to 74	3,188	1,380	1,808	57%
75 to 79	2,571	1,123	1,448	56%
80 to 84	2,104	803	1,301	62%
85 and older	2,715	997	1,718	63%
Under 18	41,638	20,734	20,904	50%
65 and older	14,920	6,347	8,573	57%
Median age	32.7	31.9	33.7	-

POPULATION BY AGE



POPULATION BY RACE, ETHNICITY AND AGE

	Non-Hispanic					
	Hispanic	White	Black	American Indian	Asian & Pacific Isl.	Other
Total Population	67,213	65,042	3,011	801	7,373	4,074
Under 5	7,959	3,396	220	31	699	397
5 to 9	6,663	3,579	186	28	386	516
10 to 14	5,657	3,789	263	44	415	484
15 to 17	3,812	2,439	153	39	223	260
18 and 19	2,713	1,740	89	30	148	165
20 to 24	5,606	4,109	222	57	428	362
25 to 29	5,800	3,579	193	66	552	316
30 to 34	6,602	3,243	222	75	522	239
35 to 39	5,940	3,717	252	37	528	182
40 to 44	4,966	4,285	245	42	561	189
45 to 49	3,799	5,403	271	58	593	205
50 to 54	2,615	5,422	246	71	557	191
55 to 59	1,708	4,721	179	59	541	178
60 and 61	536	1,803	32	26	177	38
62 to 64	673	2,497	35	30	220	50
65 to 69	791	3,161	55	29	246	60
70 to 74	550	2,322	31	22	211	52
75 to 79	387	1,888	43	24	168	61
80 to 84	214	1,667	31	19	119	54
85 and older	222	2,282	43	14	79	75
Under 18	24,091	13,203	822	142	1,723	1,657
65 and older	2,164	11,320	203	108	823	302
Median age	26.0	43.4	34.0	39.1	38.0	23.0

New Housing Structure Type Definitions:

Single Family - Detached: Traditional detached single family housing units.

Single Family - Multiple Unit: Includes single family attached housing units, duplexes, townhouses, and lower density condominium developments (generally less than 12 units per acre).

Multi-Family: Apartments and higher density condominium developments (generally more than 12 units per acre)

Mobile Home and Other: Mobile homes in mobile home parks, boats, and other housing not elsewhere classified.