

POPULATION AND HOUSING ESTIMATES (2010)
ZIP Code 92007



POPULATION AND HOUSING

	Jan. 1, 2010		
Population	10,767		
Household Population	10,764		
Group Quarters	3		
Persons per Household	2.50		
	Total Housing	Occupied Households	Vacancy Rate
Housing Units	4,674	4,312	7.7%
Single Family - Detached	2,146	1,951	9.1%
Single Family - Multiple-Unit	1,987	1,839	7.4%
Multi-Family	541	522	3.5%
Mobile Home and Other	0	0	0.0%

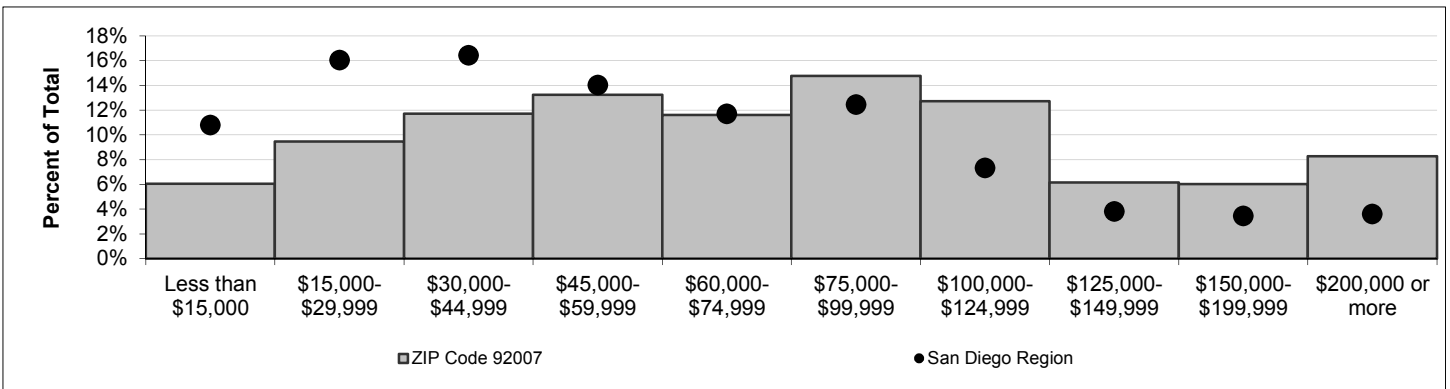
Note: For structure type definitions, see page 3.

HOUSEHOLD INCOME -- 2009 estimate (2010 data to be released winter 2010).

Households by Income Category (1999 dollars, adjusted for inflation)

	Less than \$15,000	\$15,000-\$29,999	\$30,000-\$44,999	\$45,000-\$59,999	\$60,000-\$74,999	\$75,000-\$99,999	\$100,000-\$124,999	\$125,000-\$149,999	\$150,000-\$199,999	\$200,000 or more
Households	268	419	518	585	513	653	563	272	266	366
% of Total	6%	9%	12%	13%	12%	15%	13%	6%	6%	8%

Median Household Income	Jan. 1, 2009
Adjusted for inflation (1999 \$)	\$72,325
Not adjusted for inflation (current \$)	\$101,419



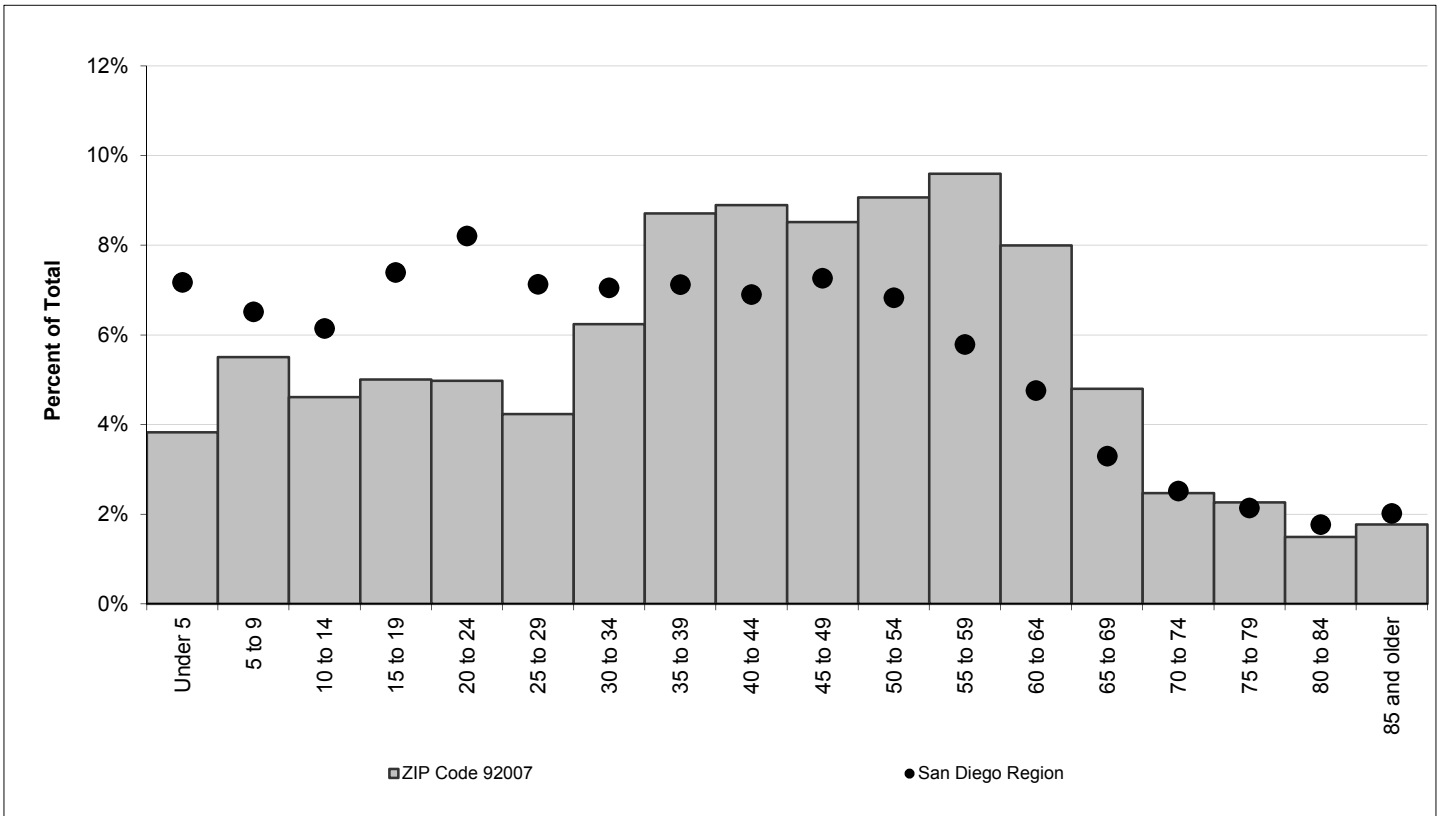
ADVISORY:

These data are annual estimates, and do not reflect Census 2010. Census 2010 data will be released in late 2010 and early 2011. Housing and demographic data are based on the following data sources: U.S. Census Bureau, Census 2000; California Department of Finance E-5 population estimates for cities and the County of San Diego (2010); San Diego County Assessor Records for housing units (2010); Vital Events Records from the California Department of Health (2008). Estimates are controlled to city- and county-level totals published by the California Department of Finance. Caution should be taken when using data for small population groups, particularly at small levels of geography.

POPULATION BY GENDER AND AGE

	Total	Male	Female	Percent Female
Total Population	10,767	5,220	5,547	52%
Under 5	412	203	209	51%
5 to 9	593	272	321	54%
10 to 14	497	243	254	51%
15 to 17	268	132	136	51%
18 and 19	271	137	134	49%
20 to 24	536	247	289	54%
25 to 29	456	220	236	52%
30 to 34	672	337	335	50%
35 to 39	938	449	489	52%
40 to 44	958	484	474	49%
45 to 49	917	479	438	48%
50 to 54	976	458	518	53%
55 to 59	1,033	490	543	53%
60 and 61	392	193	199	51%
62 to 64	469	238	231	49%
65 to 69	517	224	293	57%
70 to 74	266	135	131	49%
75 to 79	244	135	109	45%
80 to 84	161	70	91	57%
85 and older	191	74	117	61%
Under 18	1,770	850	920	52%
65 and older	1,379	638	741	54%
Median age	43.9	43.8	43.9	-

POPULATION BY AGE



POPULATION BY RACE, ETHNICITY AND AGE

	Non-Hispanic					
	Hispanic	White	Black	American Indian	Asian & Pacific Isl.	Other
Total Population	1,723	8,134	94	20	355	441
Under 5	67	295	7	1	25	17
5 to 9	114	392	1	1	15	70
10 to 14	106	359	1	0	9	22
15 to 17	64	187	0	0	9	8
18 and 19	58	197	1	1	4	10
20 to 24	142	361	3	0	11	19
25 to 29	108	310	2	1	10	25
30 to 34	187	436	4	1	14	30
35 to 39	172	692	7	1	36	30
40 to 44	155	724	9	0	26	44
45 to 49	150	698	9	2	23	35
50 to 54	104	806	7	3	24	32
55 to 59	96	846	12	2	46	31
60 and 61	40	321	2	2	20	7
62 to 64	30	400	4	1	20	14
65 to 69	59	406	8	1	21	22
70 to 74	30	200	6	1	20	9
75 to 79	25	201	2	2	8	6
80 to 84	3	144	2	0	8	4
85 and older	13	159	7	0	6	6
Under 18	351	1,233	9	2	58	117
65 and older	130	1,110	25	4	63	47
Median age	35.5	45.8	52.1	53.3	49.0	38.3

New Housing Structure Type Definitions:

Single Family - Detached: Traditional detached single family housing units.

Single Family - Multiple Unit: Includes single family attached housing units, duplexes, townhouses, and lower density condominium developments (generally less than 12 units per acre).

Multi-Family: Apartments and higher density condominium developments (generally more than 12 units per acre)

Mobile Home and Other: Mobile homes in mobile home parks, boats, and other housing not elsewhere classified.