

POPULATION AND HOUSING ESTIMATES (2010)
ZIP Code 92037



POPULATION AND HOUSING

	Jan. 1, 2010		
Population	42,146		
Household Population	41,585		
Group Quarters	561		
Persons per Household	2.31		
	Total Housing	Occupied Households	Vacancy Rate
Housing Units	20,063	17,990	10.3%
Single Family - Detached	8,666	7,824	9.7%
Single Family - Multiple-Unit	2,473	2,245	9.2%
Multi-Family	8,924	7,921	11.2%
Mobile Home and Other	0	0	0.0%

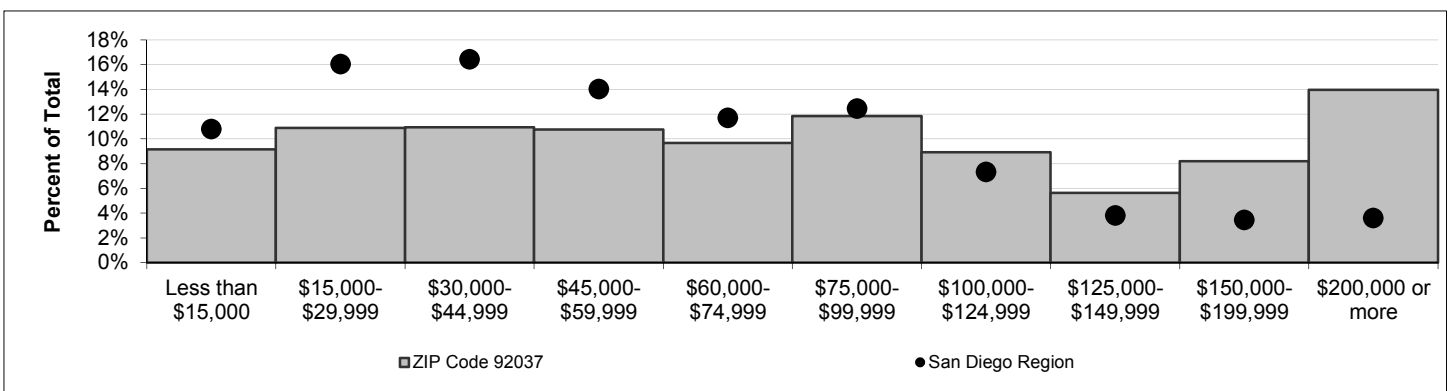
Note: For structure type definitions, see page 3.

HOUSEHOLD INCOME -- 2009 estimate (2010 data to be released winter 2010).

Households by Income Category (1999 dollars, adjusted for inflation)

	Less than \$15,000	\$15,000-\$29,999	\$30,000-\$44,999	\$45,000-\$59,999	\$60,000-\$74,999	\$75,000-\$99,999	\$100,000-\$124,999	\$125,000-\$149,999	\$150,000-\$199,999	\$200,000 or more
Households	1,669	1,981	1,994	1,961	1,762	2,158	1,627	1,028	1,492	2,545
% of Total	9%	11%	11%	11%	10%	12%	9%	6%	8%	14%

Median Household Income	Jan. 1, 2009
Adjusted for inflation (1999 \$)	\$72,799
Not adjusted for inflation (current \$)	\$102,084



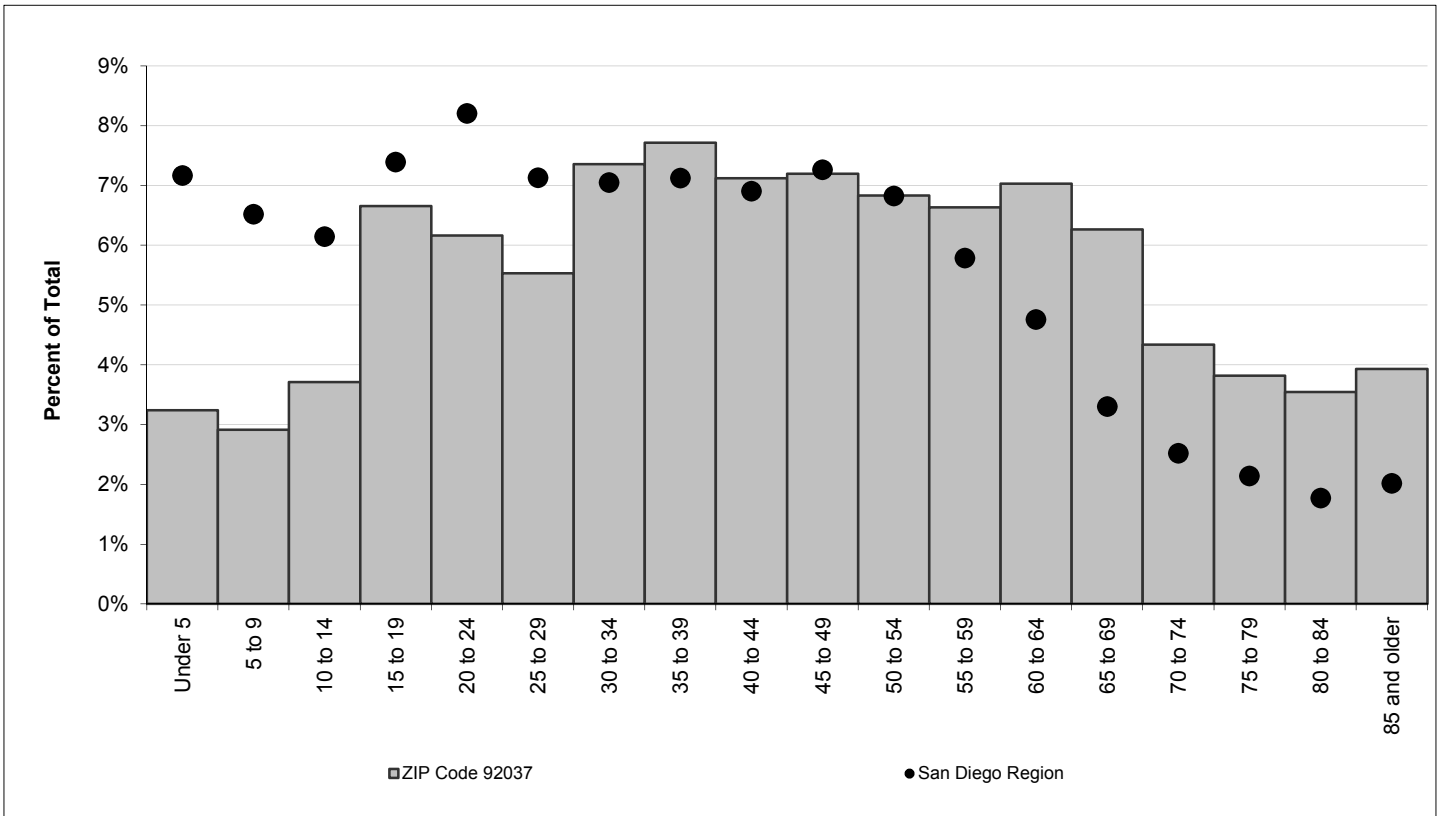
ADVISORY:

These data are annual estimates, and do not reflect Census 2010. Census 2010 data will be released in late 2010 and early 2011. Housing and demographic data are based on the following data sources: U.S. Census Bureau, Census 2000; California Department of Finance E-5 population estimates for cities and the County of San Diego (2010); San Diego County Assessor Records for housing units (2010); Vital Events Records from the California Department of Health (2008). Estimates are controlled to city- and county-level totals published by the California Department of Finance. Caution should be taken when using data for small population groups, particularly at small levels of geography.

POPULATION BY GENDER AND AGE

	Total	Male	Female	Percent Female
Total Population	42,146	19,623	22,523	53%
Under 5	1,365	667	698	51%
5 to 9	1,227	614	613	50%
10 to 14	1,565	760	805	51%
15 to 17	1,041	473	568	55%
18 and 19	1,765	805	960	54%
20 to 24	2,598	1,276	1,322	51%
25 to 29	2,331	1,107	1,224	53%
30 to 34	3,101	1,454	1,647	53%
35 to 39	3,252	1,744	1,508	46%
40 to 44	3,001	1,423	1,578	53%
45 to 49	3,032	1,512	1,520	50%
50 to 54	2,880	1,374	1,506	52%
55 to 59	2,796	1,306	1,490	53%
60 and 61	1,168	522	646	55%
62 to 64	1,794	759	1,035	58%
65 to 69	2,641	1,146	1,495	57%
70 to 74	1,828	805	1,023	56%
75 to 79	1,610	679	931	58%
80 to 84	1,495	575	920	62%
85 and older	1,656	622	1,034	62%
Under 18	5,198	2,514	2,684	52%
65 and older	9,230	3,827	5,403	59%
Median age	44.7	43.2	46.1	-

POPULATION BY AGE



POPULATION BY RACE, ETHNICITY AND AGE

	Non-Hispanic					
	Hispanic	White	Black	American Indian	Asian & Pacific Isl.	Other
Total Population	4,104	31,322	554	74	4,279	1,813
Under 5	153	940	24	4	177	67
5 to 9	169	882	15	2	94	65
10 to 14	164	1,190	19	3	70	119
15 to 17	109	801	11	7	54	59
18 and 19	221	1,041	21	1	386	95
20 to 24	306	1,621	48	8	445	170
25 to 29	337	1,454	43	7	350	140
30 to 34	457	1,623	58	9	673	281
35 to 39	440	2,189	61	11	393	158
40 to 44	308	2,155	42	2	322	172
45 to 49	292	2,232	50	4	325	129
50 to 54	292	2,248	39	7	210	84
55 to 59	217	2,336	27	2	138	76
60 and 61	75	970	15	4	70	34
62 to 64	121	1,516	22	1	96	38
65 to 69	148	2,273	30	0	145	45
70 to 74	95	1,597	12	2	101	21
75 to 79	74	1,403	7	0	89	37
80 to 84	45	1,349	5	0	78	18
85 and older	81	1,502	5	0	63	5
Under 18	595	3,813	69	16	395	310
65 and older	443	8,124	59	2	476	126
Median age	36.5	49.0	38.1	32.8	34.2	33.4

New Housing Structure Type Definitions:

Single Family - Detached: Traditional detached single family housing units.

Single Family - Multiple Unit: Includes single family attached housing units, duplexes, townhouses, and lower density condominium developments (generally less than 12 units per acre).

Multi-Family: Apartments and higher density condominium developments (generally more than 12 units per acre)

Mobile Home and Other: Mobile homes in mobile home parks, boats, and other housing not elsewhere classified.