

**POPULATION AND HOUSING ESTIMATES (2010)**  
**ZIP Code 92067**



**POPULATION AND HOUSING**

	Jan. 1, 2010		
<b>Population</b>	<b>9,372</b>		
Household Population	9,372		
Group Quarters	0		
Persons per Household	<b>2.79</b>		
	Total Housing	Occupied Households	Vacancy Rate
<b>Housing Units</b>	<b>3,793</b>	<b>3,355</b>	<b>11.5%</b>
Single Family - Detached	3,672	3,234	11.9%
Single Family - Multiple-Unit	58	58	0.0%
Multi-Family	63	63	0.0%
Mobile Home and Other	0	0	0.0%

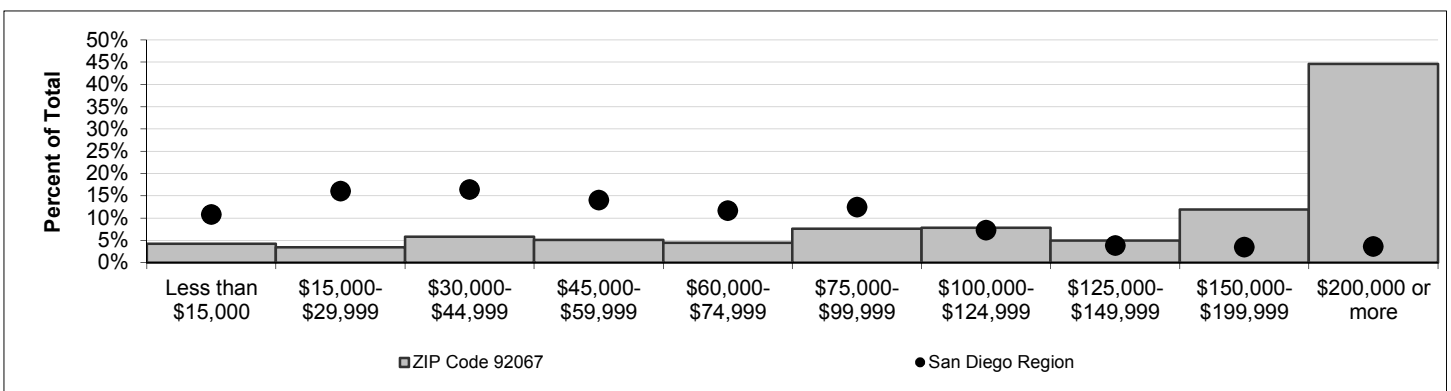
Note: For structure type definitions, see page 3.

**HOUSEHOLD INCOME -- 2009 estimate (2010 data to be released winter 2010).**

**Households by Income Category (1999 dollars, adjusted for inflation)**

	Less than \$15,000	\$15,000-\$29,999	\$30,000-\$44,999	\$45,000-\$59,999	\$60,000-\$74,999	\$75,000-\$99,999	\$100,000-\$124,999	\$125,000-\$149,999	\$150,000-\$199,999	\$200,000 or more
Households	142	114	195	169	149	254	260	165	398	1,485
% of Total	4%	3%	6%	5%	4%	8%	8%	5%	12%	45%

<b>Median Household Income</b>	Jan. 1, 2009
Adjusted for inflation (1999 \$)	\$177,324
Not adjusted for inflation (current \$)	\$248,657



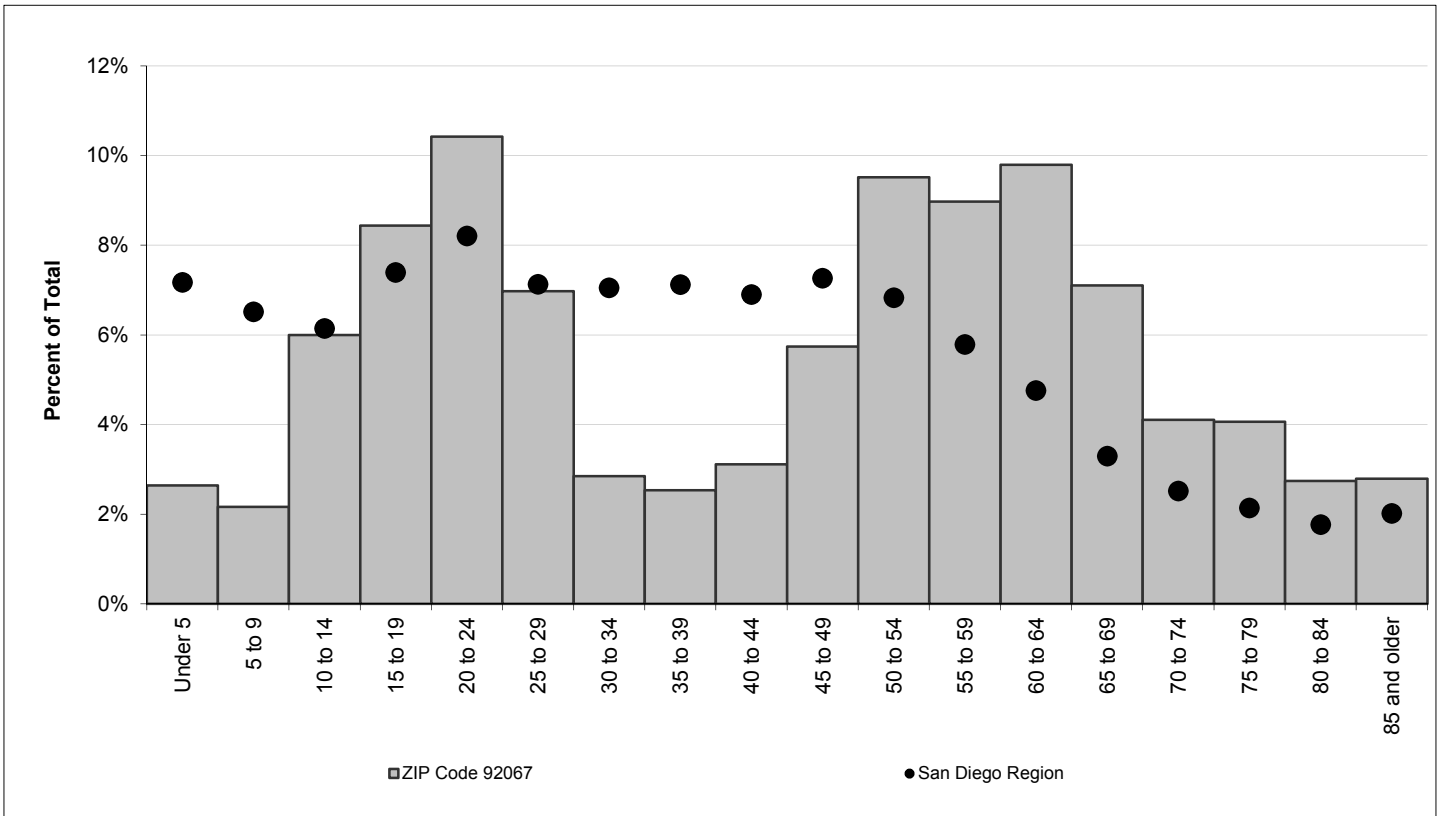
**ADVISORY:**

These data are annual estimates, and do not reflect Census 2010. Census 2010 data will be released in late 2010 and early 2011. Housing and demographic data are based on the following data sources: U.S. Census Bureau, Census 2000; California Department of Finance E-5 population estimates for cities and the County of San Diego (2010); San Diego County Assessor Records for housing units (2010); Vital Events Records from the California Department of Health (2008). Estimates are controlled to city- and county-level totals published by the California Department of Finance. Caution should be taken when using data for small population groups, particularly at small levels of geography.

## POPULATION BY GENDER AND AGE

	Total	Male	Female	Percent Female
<b>Total Population</b>	<b>9,372</b>	<b>4,601</b>	<b>4,771</b>	<b>51%</b>
Under 5	248	143	105	42%
5 to 9	203	113	90	44%
10 to 14	562	318	244	43%
15 to 17	428	222	206	48%
18 and 19	363	171	192	53%
20 to 24	977	506	471	48%
25 to 29	654	332	322	49%
30 to 34	267	144	123	46%
35 to 39	238	119	119	50%
40 to 44	292	121	171	59%
45 to 49	538	190	348	65%
50 to 54	892	438	454	51%
55 to 59	841	360	481	57%
60 and 61	354	175	179	51%
62 to 64	564	249	315	56%
65 to 69	666	342	324	49%
70 to 74	385	228	157	41%
75 to 79	381	208	173	45%
80 to 84	257	114	143	56%
85 and older	262	108	154	59%
Under 18	1,441	796	645	45%
65 and older	1,951	1,000	951	49%
Median age	49.2	47.9	49.9	-

## POPULATION BY AGE



**POPULATION BY RACE, ETHNICITY AND AGE**

	Non-Hispanic					
	Hispanic	White	Black	American Indian	Asian & Pacific Isl.	Other
<b>Total Population</b>	<b>680</b>	<b>7,950</b>	<b>50</b>	<b>16</b>	<b>485</b>	<b>191</b>
Under 5	42	166	11	0	25	4
5 to 9	50	111	1	0	27	14
10 to 14	80	423	5	0	21	33
15 to 17	49	346	6	0	9	18
18 and 19	38	301	1	1	10	12
20 to 24	96	776	10	4	44	47
25 to 29	58	538	4	0	35	19
30 to 34	43	183	1	3	32	5
35 to 39	49	134	1	2	44	8
40 to 44	36	206	3	1	41	5
45 to 49	38	467	2	1	25	5
50 to 54	41	811	0	3	28	9
55 to 59	30	762	5	1	36	7
60 and 61	6	333	0	0	13	2
62 to 64	7	534	0	0	21	2
65 to 69	10	631	0	0	25	0
70 to 74	3	351	0	0	31	0
75 to 79	4	365	0	0	11	1
80 to 84	0	253	0	0	4	0
85 and older	0	259	0	0	3	0
Under 18	221	1,046	23	0	82	69
65 and older	17	1,859	0	0	74	1
Median age	24.2	52.0	20.5	35.0	39.5	21.5

**New Housing Structure Type Definitions:**

Single Family - Detached: Traditional detached single family housing units.

Single Family - Multiple Unit: Includes single family attached housing units, duplexes, townhouses, and lower density condominium developments (generally less than 12 units per acre).

Multi-Family: Apartments and higher density condominium developments (generally more than 12 units per acre)

Mobile Home and Other: Mobile homes in mobile home parks, boats, and other housing not elsewhere classified.