

# POPULATION AND HOUSING ESTIMATES (2010)

## ZIP Code 92127



### POPULATION AND HOUSING

	Jan. 1, 2010		
<b>Population</b>	<b>35,902</b>		
Household Population	35,510		
Group Quarters	392		
Persons per Household	<b>2.76</b>		
	Total Housing	Occupied Households	Vacancy Rate
<b>Housing Units</b>	<b>13,303</b>	<b>12,875</b>	<b>3.2%</b>
Single Family - Detached	8,133	7,811	4.0%
Single Family - Multiple-Unit	641	620	3.3%
Multi-Family	4,529	4,444	1.9%
Mobile Home and Other	0	0	0.0%

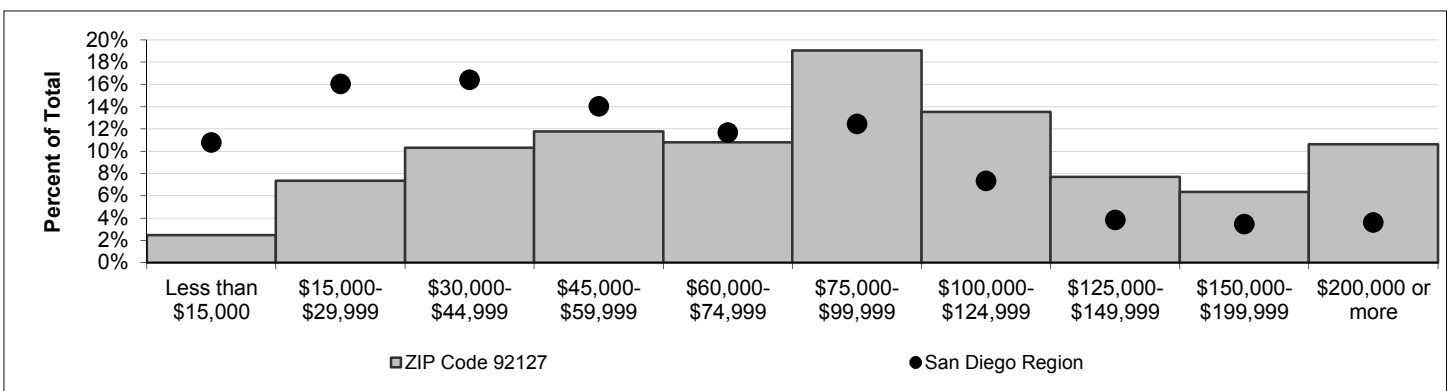
Note: For structure type definitions, see page 3.

### HOUSEHOLD INCOME -- 2009 estimate (2010 data to be released winter 2010).

#### Households by Income Category (1999 dollars, adjusted for inflation)

	Less than \$15,000	\$15,000-\$29,999	\$30,000-\$44,999	\$45,000-\$59,999	\$60,000-\$74,999	\$75,000-\$99,999	\$100,000-\$124,999	\$125,000-\$149,999	\$150,000-\$199,999	\$200,000 or more
Households	317	942	1,320	1,507	1,379	2,433	1,731	983	810	1,358
% of Total	2%	7%	10%	12%	11%	19%	14%	8%	6%	11%

<b>Median Household Income</b>	Jan. 1, 2009
Adjusted for inflation (1999 \$)	\$84,505
Not adjusted for inflation (current \$)	\$118,499



### ADVISORY:

These data are annual estimates, and do not reflect Census 2010. Census 2010 data will be released in late 2010 and early 2011.

Housing and demographic data are based on the following data sources: U.S. Census Bureau, Census 2000; California Department of Finance

E-5 population estimates for cities and the County of San Diego (2010); San Diego County Assessor Records for housing units (2010);

Vital Events Records from the California Department of Health (2008).

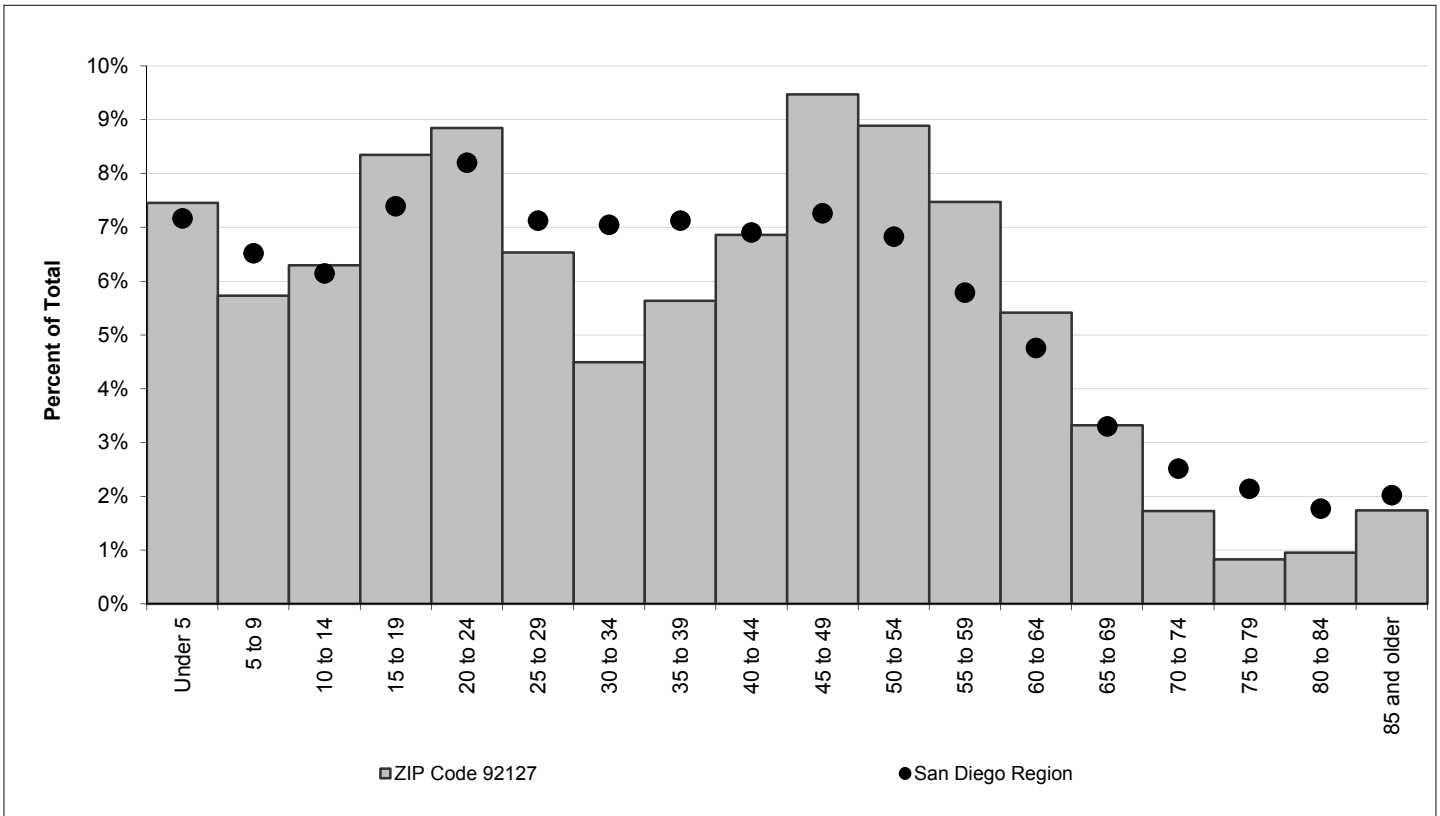
Estimates are controlled to city- and county-level totals published by the California Department of Finance.

Caution should be taken when using data for small population groups, particularly at small levels of geography.

## POPULATION BY GENDER AND AGE

	Total	Male	Female	Percent Female
<b>Total Population</b>	<b>35,902</b>	<b>17,277</b>	<b>18,625</b>	<b>52%</b>
Under 5	2,677	1,347	1,330	50%
5 to 9	2,056	1,035	1,021	50%
10 to 14	2,259	1,096	1,163	51%
15 to 17	1,730	898	832	48%
18 and 19	1,267	620	647	51%
20 to 24	3,176	1,622	1,554	49%
25 to 29	2,345	1,302	1,043	44%
30 to 34	1,613	782	831	52%
35 to 39	2,023	981	1,042	52%
40 to 44	2,463	1,151	1,312	53%
45 to 49	3,400	1,578	1,822	54%
50 to 54	3,191	1,416	1,775	56%
55 to 59	2,682	1,246	1,436	54%
60 and 61	889	412	477	54%
62 to 64	1,054	498	556	53%
65 to 69	1,192	534	658	55%
70 to 74	620	265	355	57%
75 to 79	298	130	168	56%
80 to 84	342	145	197	58%
85 and older	625	219	406	65%
Under 18	8,722	4,376	4,346	50%
65 and older	3,077	1,293	1,784	58%
Median age	37.0	34.6	39.3	-

## POPULATION BY AGE



## POPULATION BY RACE, ETHNICITY AND AGE

	Non-Hispanic					
	Hispanic	White	Black	American Indian	Asian & Pacific Isl.	Other
<b>Total Population</b>	<b>3,169</b>	<b>23,226</b>	<b>868</b>	<b>155</b>	<b>6,897</b>	<b>1,587</b>
Under 5	254	1,437	37	22	805	122
5 to 9	186	1,304	18	2	453	93
10 to 14	187	1,392	33	4	389	254
15 to 17	157	1,165	31	7	240	130
18 and 19	128	815	28	4	216	76
20 to 24	349	1,951	82	8	556	230
25 to 29	272	1,377	81	11	441	163
30 to 34	204	918	48	13	318	112
35 to 39	268	1,163	71	21	408	92
40 to 44	255	1,491	104	19	510	84
45 to 49	286	2,237	139	21	621	96
50 to 54	209	2,234	82	6	609	51
55 to 59	151	1,947	37	9	511	27
60 and 61	48	645	7	1	175	13
62 to 64	79	806	10	2	154	3
65 to 69	59	908	23	2	189	11
70 to 74	35	423	15	2	136	9
75 to 79	14	205	1	0	67	11
80 to 84	16	255	15	1	53	2
85 and older	12	553	6	0	46	8
Under 18	784	5,298	119	35	1,887	599
65 and older	136	2,344	60	5	491	41
Median age	31.3	40.3	40.2	36.5	35.4	22.6

### New Housing Structure Type Definitions:

Single Family - Detached: Traditional detached single family housing units.

Single Family - Multiple Unit: Includes single family attached housing units, duplexes, townhouses, and lower density condominium developments (generally less than 12 units per acre).

Multi-Family: Apartments and higher density condominium developments (generally more than 12 units per acre)

Mobile Home and Other: Mobile homes in mobile home parks, boats, and other housing not elsewhere classified.