

POPULATION AND HOUSING ESTIMATES (2010)
ZIP Code 92130



POPULATION AND HOUSING

	Jan. 1, 2010		
Population	49,952		
Household Population	49,736		
Group Quarters	216		
Persons per Household	2.87		
	Total Housing	Occupied Households	Vacancy Rate
Housing Units	18,463	17,349	6.0%
Single Family - Detached	10,222	9,475	7.3%
Single Family - Multiple-Unit	826	804	2.7%
Multi-Family	7,415	7,070	4.7%
Mobile Home and Other	0	0	0.0%

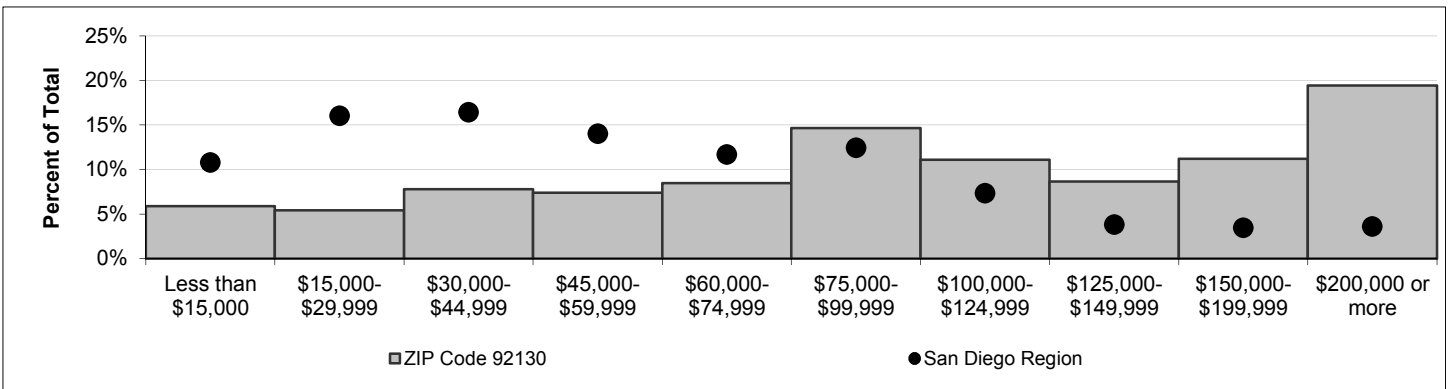
Note: For structure type definitions, see page 3.

HOUSEHOLD INCOME -- 2009 estimate (2010 data to be relased winter 2010).

Households by Income Category (1999 dollars, adjusted for inflation)

	Less than \$15,000	\$15,000-\$29,999	\$30,000-\$44,999	\$45,000-\$59,999	\$60,000-\$74,999	\$75,000-\$99,999	\$100,000-\$124,999	\$125,000-\$149,999	\$150,000-\$199,999	\$200,000 or more
Households	1,026	945	1,363	1,291	1,479	2,561	1,936	1,509	1,954	3,394
% of Total	6%	5%	8%	7%	8%	15%	11%	9%	11%	19%

Median Household Income	Jan. 1, 2009
Adjusted for inflation (1999 \$)	\$100,826
Not adjusted for inflation (current \$)	\$141,386



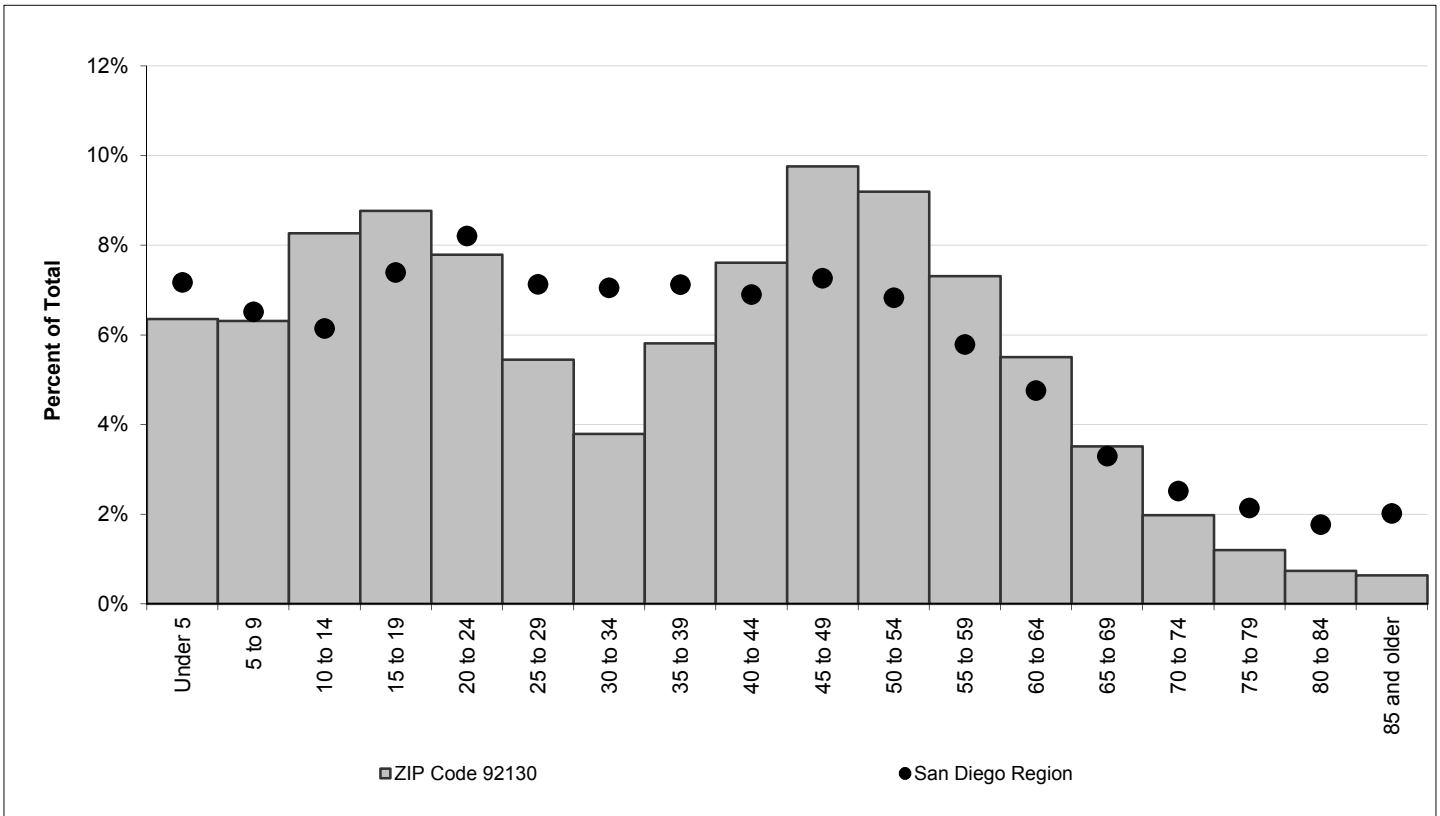
ADVISORY:

These data are annual estimates, and do not reflect Census 2010. Census 2010 data will be released in late 2010 and early 2011. Housing and demographic data are based on the following data sources: U.S. Census Bureau, Census 2000; California Department of Finance E-5 population estimates for cities and the County of San Diego (2010); San Diego County Assessor Records for housing units (2010); Vital Events Records from the California Department of Health (2008). Estimates are controlled to city- and county-level totals published by the California Department of Finance. Caution should be taken when using data for small population groups, particularly at small levels of geography.

POPULATION BY GENDER AND AGE

	Total	Male	Female	Percent Female
Total Population	49,952	24,008	25,944	52%
Under 5	3,173	1,539	1,634	51%
5 to 9	3,154	1,583	1,571	50%
10 to 14	4,131	2,098	2,033	49%
15 to 17	2,716	1,391	1,325	49%
18 and 19	1,663	840	823	49%
20 to 24	3,891	1,967	1,924	49%
25 to 29	2,721	1,414	1,307	48%
30 to 34	1,896	937	959	51%
35 to 39	2,903	1,341	1,562	54%
40 to 44	3,801	1,658	2,143	56%
45 to 49	4,874	2,234	2,640	54%
50 to 54	4,594	2,196	2,398	52%
55 to 59	3,652	1,741	1,911	52%
60 and 61	1,284	607	677	53%
62 to 64	1,466	705	761	52%
65 to 69	1,756	803	953	54%
70 to 74	988	450	538	54%
75 to 79	599	263	336	56%
80 to 84	370	125	245	66%
85 and older	320	116	204	64%
Under 18	13,174	6,611	6,563	50%
65 and older	4,033	1,757	2,276	56%
Median age	37.8	35.9	39.5	-

POPULATION BY AGE



POPULATION BY RACE, ETHNICITY AND AGE

	Non-Hispanic					
	Hispanic	White	Black	American Indian	Asian & Pacific Isl.	Other
Total Population	3,827	33,725	455	81	10,167	1,697
Under 5	322	1,847	47	23	822	112
5 to 9	339	1,987	39	11	572	206
10 to 14	349	2,529	69	7	745	432
15 to 17	285	1,669	55	6	507	194
18 and 19	207	1,034	32	1	279	110
20 to 24	469	2,429	46	3	748	196
25 to 29	364	1,563	26	6	638	124
30 to 34	290	1,016	21	4	480	85
35 to 39	309	1,816	22	3	685	68
40 to 44	226	2,667	16	2	844	46
45 to 49	227	3,527	39	6	1,027	48
50 to 54	234	3,403	23	2	891	41
55 to 59	107	2,887	9	3	615	31
60 and 61	30	1,058	2	0	192	2
62 to 64	20	1,254	1	3	187	1
65 to 69	32	1,385	4	1	333	1
70 to 74	10	677	3	0	298	0
75 to 79	7	403	1	0	188	0
80 to 84	0	297	0	0	73	0
85 and older	0	277	0	0	43	0
Under 18	1,295	8,032	210	47	2,646	944
65 and older	49	3,039	8	1	935	1
Median age	24.4	41.8	19.1	14.6	37.1	16.6

New Housing Structure Type Definitions:

Single Family - Detached: Traditional detached single family housing units.

Single Family - Multiple Unit: Includes single family attached housing units, duplexes, townhouses, and lower density condominium developments (generally less than 12 units per acre).

Multi-Family: Apartments and higher density condominium developments (generally more than 12 units per acre)

Mobile Home and Other: Mobile homes in mobile home parks, boats, and other housing not elsewhere classified.