

POPULATION AND HOUSING ESTIMATES (2010)
ZIP Code 92131



POPULATION AND HOUSING

	Jan. 1, 2010		
Population	34,906		
Household Population	34,693		
Group Quarters	213		
Persons per Household	2.99		
	Total Housing	Occupied Households	Vacancy Rate
Housing Units	12,207	11,616	4.8%
Single Family - Detached	8,055	7,634	5.2%
Single Family - Multiple-Unit	1,546	1,489	3.7%
Multi-Family	2,606	2,493	4.3%
Mobile Home and Other	0	0	0.0%

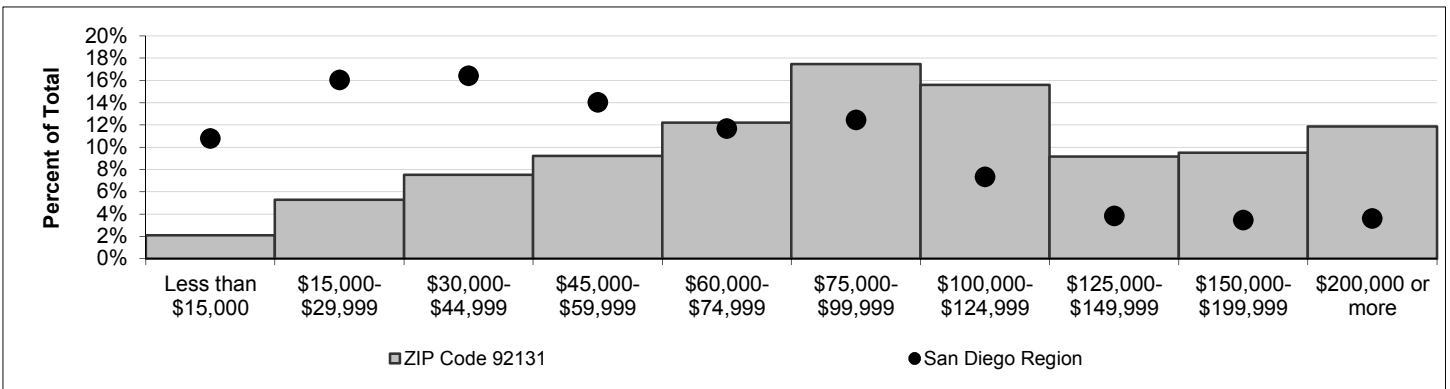
Note: For structure type definitions, see page 3.

HOUSEHOLD INCOME -- 2009 estimate (2010 data to be released winter 2010).

Households by Income Category (1999 dollars, adjusted for inflation)

	Less than \$15,000	\$15,000-\$29,999	\$30,000-\$44,999	\$45,000-\$59,999	\$60,000-\$74,999	\$75,000-\$99,999	\$100,000-\$124,999	\$125,000-\$149,999	\$150,000-\$199,999	\$200,000 or more
Households	249	622	886	1,085	1,439	2,058	1,838	1,080	1,121	1,398
% of Total	2%	5%	8%	9%	12%	17%	16%	9%	10%	12%

Median Household Income	Jan. 1, 2009
Adjusted for inflation (1999 \$)	\$94,521
Not adjusted for inflation (current \$)	\$132,544



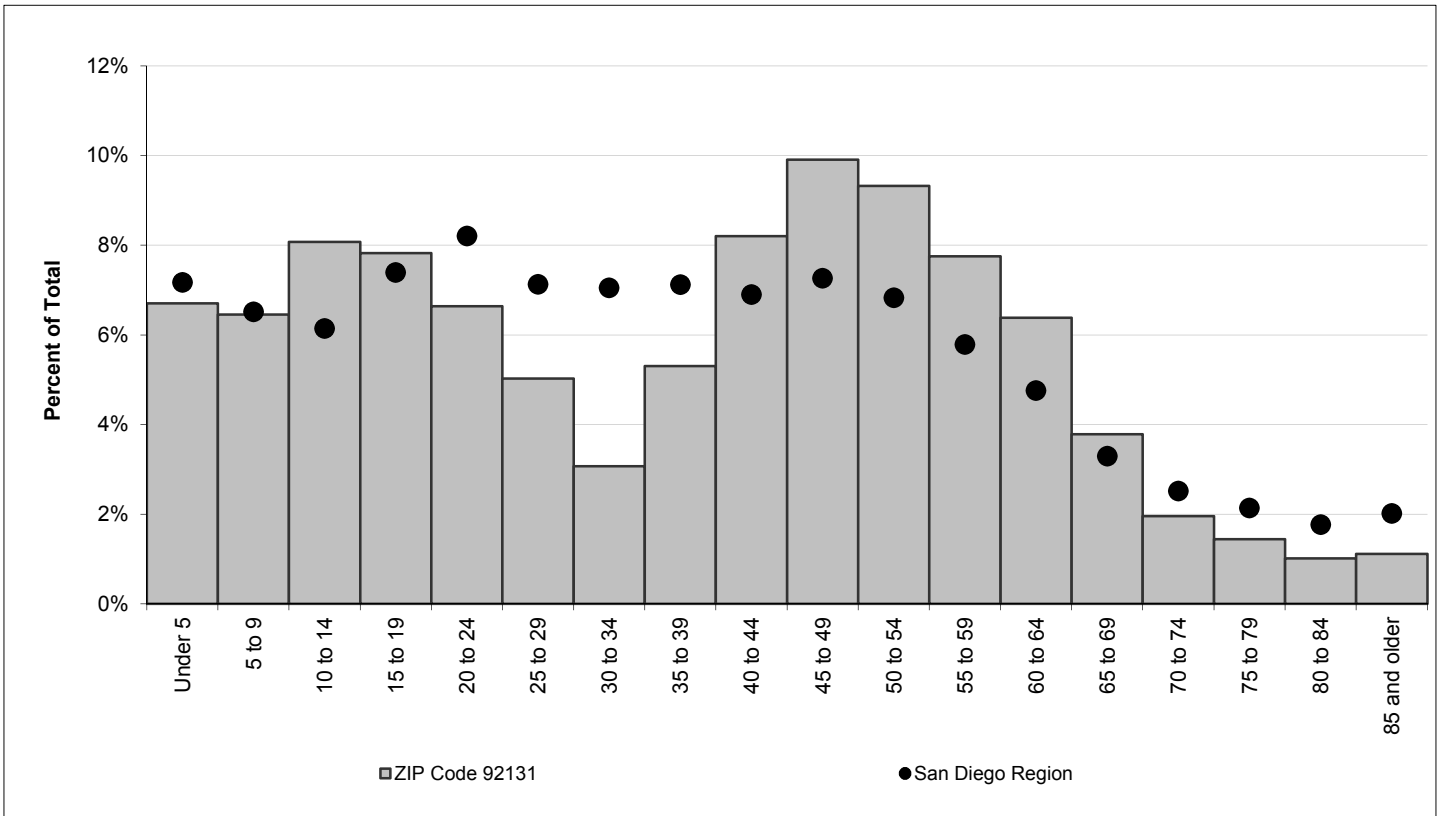
ADVISORY:

These data are annual estimates, and do not reflect Census 2010. Census 2010 data will be released in late 2010 and early 2011. Housing and demographic data are based on the following data sources: U.S. Census Bureau, Census 2000; California Department of Finance E-5 population estimates for cities and the County of San Diego (2010); San Diego County Assessor Records for housing units (2010); Vital Events Records from the California Department of Health (2008). Estimates are controlled to city- and county-level totals published by the California Department of Finance. Caution should be taken when using data for small population groups, particularly at small levels of geography.

POPULATION BY GENDER AND AGE

	Total	Male	Female	Percent Female
Total Population	34,906	16,933	17,973	51%
Under 5	2,339	1,190	1,149	49%
5 to 9	2,253	1,103	1,150	51%
10 to 14	2,819	1,366	1,453	52%
15 to 17	1,682	854	828	49%
18 and 19	1,050	502	548	52%
20 to 24	2,319	1,144	1,175	51%
25 to 29	1,754	865	889	51%
30 to 34	1,073	534	539	50%
35 to 39	1,851	874	977	53%
40 to 44	2,864	1,293	1,571	55%
45 to 49	3,459	1,667	1,792	52%
50 to 54	3,255	1,562	1,693	52%
55 to 59	2,707	1,275	1,432	53%
60 and 61	984	458	526	53%
62 to 64	1,245	644	601	48%
65 to 69	1,322	687	635	48%
70 to 74	683	343	340	50%
75 to 79	504	240	264	52%
80 to 84	354	160	194	55%
85 and older	389	172	217	56%
Under 18	9,093	4,513	4,580	50%
65 and older	3,252	1,602	1,650	51%
Median age	40.5	40.1	40.9	-

POPULATION BY AGE



POPULATION BY RACE, ETHNICITY AND AGE

	Non-Hispanic					
	Hispanic	White	Black	American Indian	Asian & Pacific Isl.	Other
Total Population	2,960	24,129	812	82	5,664	1,259
Under 5	247	1,329	43	19	640	61
5 to 9	183	1,484	41	5	451	89
10 to 14	221	1,998	43	6	407	144
15 to 17	153	1,212	36	1	181	99
18 and 19	91	750	15	1	148	45
20 to 24	205	1,627	64	6	303	114
25 to 29	218	1,154	38	2	255	87
30 to 34	191	561	35	5	216	65
35 to 39	215	1,142	36	7	383	68
40 to 44	198	1,909	71	6	579	101
45 to 49	261	2,435	103	4	532	124
50 to 54	203	2,431	109	5	412	95
55 to 59	179	2,077	72	11	313	55
60 and 61	65	743	19	0	133	24
62 to 64	73	980	24	1	143	24
65 to 69	105	975	20	2	197	23
70 to 74	51	472	11	1	130	18
75 to 79	47	340	10	0	99	8
80 to 84	28	239	11	0	72	4
85 and older	26	271	11	0	70	11
Under 18	804	6,023	163	31	1,679	393
65 and older	257	2,297	63	3	568	64
Median age	34.2	42.1	43.9	31.0	38.0	29.5

New Housing Structure Type Definitions:

Single Family - Detached: Traditional detached single family housing units.

Single Family - Multiple Unit: Includes single family attached housing units, duplexes, townhouses, and lower density condominium developments (generally less than 12 units per acre).

Multi-Family: Apartments and higher density condominium developments (generally more than 12 units per acre)

Mobile Home and Other: Mobile homes in mobile home parks, boats, and other housing not elsewhere classified.